

primus

laundry equipment

FX LINE

Xtreme
in innovation

Washer Evolution



MESSAGE FROM THE CEO

Eddy Coppieters

DEAR DISTRIBUTOR,

PRIMUS IS PROUD TO PRESENT THE **NEW FX LINE OF WASHER EXTRACTORS**. THEIR CONTEMPORARY LOOK COMBINED WITH THEIR HIGH TECHNOLOGICAL LEVEL WILL PROVIDE YOU WITH A PACKAGE OF SALES ARGUMENTS AND THE RIGHT AMMUNITION TO CREATE VALUE AND TO POSITION YOURSELVES IN THE GLOBAL MARKET.

After approximately two years of research and development, our team of engineers – in a joint effort with sales and marketing, logistics and production – succeeded in creating a brand-new line of free-standing washer extractors.

Throughout the development cycle, we tested the new features thoroughly with the most up-to-date testing equipment in order to achieve the highest levels of durability, reliability, electronics and performance.

Simple construction, ease-of-use, durability, low energy consumption in all aspects, high performance, time savings, user-friendly service – and, especially, an excellent washing result – were the main qualities that we focused on during the entire period of development.

This brochure will introduce you to the innovative FX line, with capacities of 7, 8, 11, 14, 18 and 24 kg – the washer extractor of the future.

Eddy Coppieters

CEO Primus Group

CONTENT

FX line brochure

- 2** Message from the CEO
- 3** FX line range
- 4** Xtreme energy, ecology, design, ergonomics
 - 6** Xtreme energy
 - 7** Xtreme ecology
 - 8** Xtreme design
 - 9** Xtreme ergonomics
- 10** FX 65, 80, 105
- 12** FX 135, 180, 240
- 14** ECO³ WASH Technology
- 15** List of washing programmes
- 16** FX Techspec 65, 80, 105, 135, 180, 240
- 20** Final word of VP Marketing and Sales

FX LINE



FX65



FX80



FX105



FX135



FX180



FX240

Xtreme
in innovation



XTREME ENERGY

IN MANY REGIONS, WATER AND ENERGY CONSUMPTION ARE THE MAIN PART OF A SALE. To meet these requirements, the FX Line has been designed to achieve Xtreme low water and energy consumption.

Xtreme
in innovation



XTREME DESIGN

MARKET RESEARCH REGARDING CUSTOMER EXPECTATIONS FOR A NEW LINE OF FRONT LOADERS SHOWS THAT DESIGN IS A VERY IMPORTANT ASPECT. As in the household sector, industrial innovations must be accentuated by design.

XTREME ECOLOGY

THE FX MACHINES ARE DESIGNED TO CONSUME XTREMELY LITTLE WATER - WITHOUT REDUCING THE WASHING QUALITY. In order to achieve this, the space between drum and tub has been optimised. The heating elements are now in a 'sink' to protect them during the Xtremely low water consumption.



FX LINE

INNOVATION BY PRIMUS



XTREME ERGONOMICS

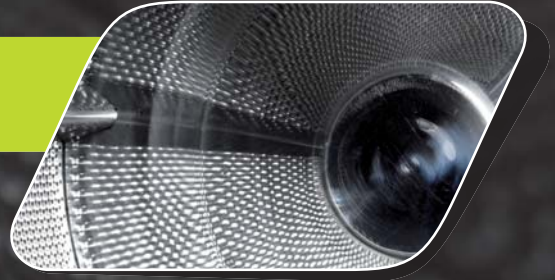
AS THE NEW FX LINE WAS BEING DEVELOPED, STRONG FOCUS WAS PLACED ON THE ERGONOMICS OF THE MACHINES, FROM THE USER'S AS WELL AS THE OWNER'S POINT OF VIEW. Because the diameter of the door opening is crucial for easy loading and unloading, the maximum diameter was calculated for each model.

Primus

XTREME ENERGY

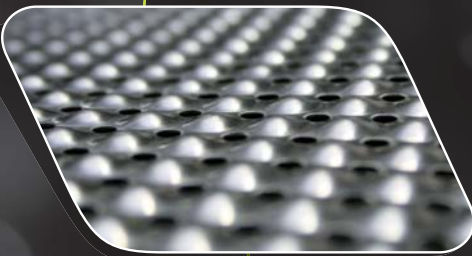
THE FX WASHER EXTRACTORS ARE STANDARD EQUIPPED WITH THE REVOLUTIONARY CASCADE™ DRUMS. THE SMALL BULGES BETWEEN THE PERFORATIONS IN THIS UNIQUE INNOVATIVE CONCEPT PROVIDE MANY ADVANTAGES.

- 25% LESS HUMIDITY
- 20% LESS ENERGY FOR DRYING



PRIMUS INTRODUCES THE UNIQUE CASCADE™ DRUM

- Despite the extraction of 400 G of water, the linen does not stick to the drum – which simplifies unloading.
- Thanks to the CASCADE™ concept, there are more perforations in the drum over the same surface – so water extraction is much more efficient.
- The inclination of the bulges causes even more water to be extracted – so, the percentage of humidity after extraction is extremely low.
- The CASCADE™ shape of the drum holes provides an extra mechanical action that produces in an even better washing result.



CASCADE DRUM™
unique innovative concept



XTREME ECOLOGY

THE FX MACHINES ARE DESIGNED TO CONSUME XTREMELY LITTLE WATER - WITHOUT REDUCING THE WASHING QUALITY. IN ORDER TO ACHIEVE THIS, THE SPACE BETWEEN DRUM AND TUB HAS BEEN OPTIMISED. THE HEATING ELEMENTS ARE NOW IN A 'SINK' TO PROTECT THEM DURING THE XTREMELY LOW WATER CONSUMPTION.

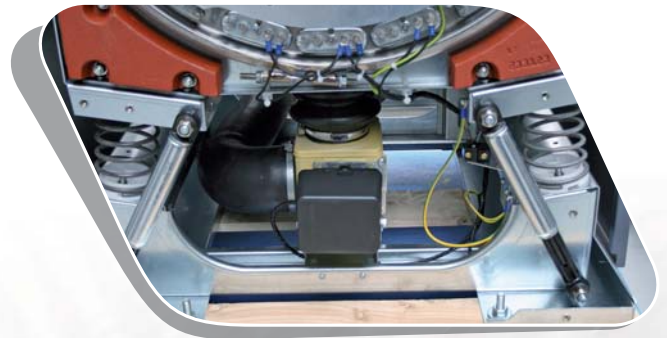


15% LESS WATER
CONSUMPTION

LESS WATER IN A PASSIVE SPACE BETWEEN TUB AND DRUM

Thanks to a couple of innovations, the amount of water that is used has been reduced:

- The passive space was changed by re-positioning the temperature sensor and the heating elements.
- Also, the space between the tub and the drain valve has been reduced.



ECO³
wash technology



HEATING ELEMENT
AND TEMPERATURE SENSOR
UNDER THE LOW WATER LEVEL

XTREME DESIGN

MARKET RESEARCH REGARDING CUSTOMER EXPECTATIONS FOR A NEW LINE OF FRONT LOADERS SHOWS THAT DESIGN IS A VERY IMPORTANT ASPECT. AS IN THE HOUSEHOLD SECTOR, INDUSTRIAL INNOVATIONS MUST BE ACCENTUATED BY DESIGN.



EASY TO USE DOOR KNOB

SHAPE OF THE CONTROL PANEL – „NOSE“

The control panel is inclined to make the operator's work more ergonomic. Options in the menu scroll up and down - very intuitive use for regular customers. Display shows which soap hopper compartment to use.

XControl Plus programmer with unlimited programming possibilities for laundry professionals. USB plug for fast and easy uploading of new washing programmes.



CONTROL PANEL
unique innovative concept

XCONTROL



XTREME ERGONOMICS

BECAUSE THE DIAMETER OF THE DOOR OPENING IS CRUCIAL FOR EASY LOADING AND UNLOADING, THE MAXIMUM DIAMETER WAS CALCULATED FOR EACH MODEL. IN ADDITION, THE DOOR OPENS 180° FOR GREATER USER-FRIENDLINESS.

SOAP HOPPER IN THE FRONT, CENTRAL POSITION

AS THE NEW FX LINE WAS BEING DEVELOPED, STRONG FOCUS WAS PLACED ON THE ERGONOMICS OF THE MACHINES, FROM THE USER'S AS WELL AS THE OWNER'S POINT OF VIEW.



SOAP HOPPER
unique innovative concept



The soapbox consists of 4 compartments, suitable for powder as well as liquid soap. Plus, for additional ease-of-use, the compartments are now ergonomically located at the front of the lid and next to each other. To make things easier for the owner, all compartments have been designed to allow easy access during service.

The compartment for the main wash is modular, so the size of the cup can be switched depending on the size of the machine. The compartments can be covered (covers are optional) to prevent customers from making mistakes.

LARGE DOOR OPENING

The maximum diameter for the door opening has been calculated for each model to make loading and unloading easy. In addition, the door opens 180° for greater user-friendliness.



FX 65/80/105

WASHER EXTRACTOR

FX 105

FX 80

FX 65

WASHER EXTRACTOR	FX 65	FX 80	FX 105
Capacity	7 kg	8 kg	11 kg
Drum volume	65 l	75 l	105 l
Extraction speed	1165 RPM	1165 RPM	1075 RPM
G - Factor	400	400	400
Rest humidity	45 %	45 %	45 %



WASHER-EXTRACTORS FX 65/80/105

FEATURES

- Free-standing, high spin
- Stainless steel top panel & Anthracite grey front and side panels
- XControl - easy-to-use microprocessor
- Patented Soap Hopper with 4 compartments
- Large drain valve (Ø 76 mm)
- Easy access to all vital parts from the front (heating elements, drain valve, etc.)
- Large door opening for easy loading & unloading, door opens 180°
- Easy-to-access control board (simply tilt the fascia panel)
- USB connection inside on control board for easy installation of washing programmes



XControl
microprocessor

OPTIONS

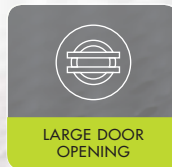
- XControl Plus - Fully programmable microprocessor with almost unlimited possibilities
- Coin operated timer or version for Central Payment Systems (CPS)
- USB plug (on the back panel)
- Stainless steel front panel
- Stainless steel side panels
- Easy Soap - liquid soaps connection (electrical connection to the control board)
- Liquid soap pumps
- Drain Pump (FX 80)
- Water recovery kit (preparation for recycling system)
- Steam heating version



XControl PLUS
microprocessor



ERGONOMIC
CONSTRUCTION



LARGE DOOR
OPENING



LOW WATER AND ENERGY
CONSUMPTION



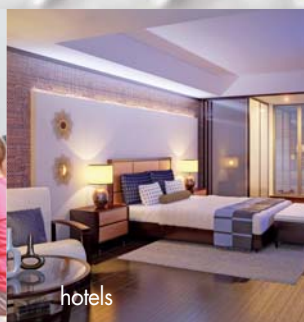
restaurants



hairdressers



child care



hotels



fitness

FX 135/180/240

WASHER EXTRACTOR



FX 240



FX 180



FX 135

WASHER EXTRACTOR	FX 135	FX 180	FX 240
Capacity	14 kg	18 kg	24 kg
Drum volume	135 l	180 l	240 l
Extraction speed	1075 RPM	980 RPM	980 RPM
G - Factor	400	400	400
Rest humidity	45 %	45 %	45 %



elderly care

WASHER-EXTRACTORS FX 135/180/240

FEATURES

- Free-standing, high spin
- Stainless steel top panel & Anthracite grey front and side panels
- XControl - easy-to-use microprocessor
- Patented Soap Hopper with 4 compartments
- Large drain valve (Ø 76 mm)
- Easy access to all vital parts from the front (heating elements, drain valve, etc.)
- Large door opening for easy loading & unloading, door opens 180°
- Easy-to-access control board (simply tilt the fascia panel)
- USB connection inside on control board for easy installation of washing programmes



XControl
microprocessor

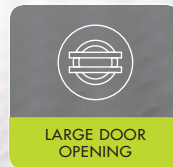


OPTIONS

- XControl Plus - Fully programmable microprocessor with almost unlimited possibilities
- Coin operated timer or version for Central Payment Systems (CPS)
- USB plug (on the back panel)
- Stainless steel front panel
- Stainless steel side panels
- Easy Soap - liquid soaps connection (electrical connection to the control board)
- Liquid soap pumps
- Water recovery kit (preparation for recycling system)
- Steam heating version



XControl PLUS
microprocessor



ECO³ WASH TECHNOLOGY - THE NEW FX LINE
HAS BEEN DEVELOPED WITH A STRONG FOCUS
ON LOW WATER AND ENERGY CONSUMPTION



20% LESS ENERGY CONSUMPTION

Using the lower water levels has reduced the energy required for heating as well.

15% LESS WATER CONSUMPTION

Optimising the passive space between tub and drum has minimised water consumption considerably.



25% LESS RESIDUAL MOISTURE

Thanks to the final extraction's very high RPM, the laundry has exceptionally low residual moisture, which also reduces the energy required for drying.

FX LINE
ECO³ WASH TECHNOLOGY

LIST OF WASHING PROGRAMMES

*ALL VALUES BASED ON 8 KG LOAD IN FX80 AND COLD WATER INLET ONLY

PROGRAM	SPIN SPEED	WATER CONSUMPTION	ENERGY CONSUMPTION	REAL TIME	RINSES
1 HOT WASH 90° INTENSIVE	1120	131,4 l	4,3 kWh	57'52"	3
2 WARM WASH 60° INTENSIVE	1120	99,6 l	1,97 kWh	51'21"	3
3 COLOR WASH 40° INTENSIVE	1120	124,1 l	1,66 kWh	58'44"	3
4 BRIGHT 30° INTENSIVE	1120	86,0 l	0,52 kWh	34'27"	3
5 WOOLENS 15°	400	61,6 l	0,04 kWh	22'32"	3
6 HOT WASH 90°	1120	89,5 l	3,49 kWh	1:32'41"	3
7 WARM WASH 60°	1120	79,8 l	1,68 kWh	1:04'20"	3
8 COLOR 40°	1120	82,0 l	1,09 kWh	1:02'24"	3
9 BRIGHT 30°	1120	77,9 l	0,48 kWh	0:53'07"	3
10 ECO HOT 90°	1165	69,4 l	2,86 kWh	1:00'58"	2
11 ECO WARM 60°	1165	58,5 l	1,44 kWh	43'02"	2
12 ECO COLOR 40°	1165	68,2 l	1,02 kWh	42'32"	2
13 ECO BRIGHT 30°	1165	60,3 l	0,54 kWh	32'06"	2
14 LOW SPIN	400	35,1 l	0,03 kWh	11'19"	1
15 HIGH SPIN	1165	38,7 l	0,13 kWh	19'05"	1

Test values according to European domestic standard EN60456 and a cold water inlet.

TYPE		FX 65
CAPACITY	kg	7
drum volume	litres	65
diameter	mm	530
DRUM SPEED		
wash	rpm	49
extraction	rpm	1165
G-FACTOR		400
HEATING		
electricity (standard)	kW	6 / 9
steam	bar	1 - 8
hot water	°C	90
WEIGHT, NET	kg	156
Sound pressure level	dB (A)	< 65
Water valves connection	BSP	3/4"
Water pressure	kPa	100-800
Rec. water pressure	kPa	300-500
Water inlet	l/min	20
Drain valve	outer Ø mm	76
Flow amount with drain valve	l/min	210
Steam valve connection	BSP	1/2"

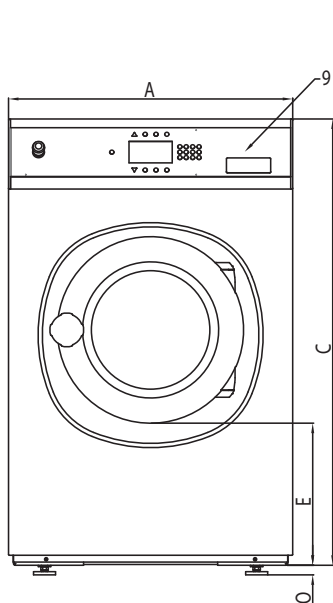
TYPE		FX 80
CAPACITY	kg	8
drum volume	litres	75
diameter	mm	530
DRUM SPEED		
wash	rpm	49
extraction	rpm	1165
G-FACTOR		400
HEATING		
electricity (standard)	kW	6 / 9
steam	bar	1 - 8
hot water	°C	90
WEIGHT, NET	kg	185
Sound pressure level	dB (A)	< 65
Water valves connection	BSP	3/4"
Water pressure	kPa	100-800
Rec. water pressure	kPa	300-500
Water inlet	l/min	20
Drain valve	outer Ø mm	76
Flow amount with drain valve	l/min	210
Steam valve connection	BSP	1/2"

TYPE		FX 105
CAPACITY	kg	11
drum volume	litres	105
diameter	mm	620
DRUM SPEED		
wash	rpm	49
extraction	rpm	1075
G-FACTOR		400
HEATING		
electricity (standard)	kW	6 / 9 / 12
steam	bar	1 - 8
hot water	°C	90
WEIGHT, NET	kg	210
Sound pressure level	dB (A)	< 65
Water valves connection	BSP	3/4"
Water pressure	kPa	100-800
Rec. water pressure	kPa	300-500
Water inlet	l/min	20
Drain valve	outer Ø mm	76
Flow amount with drain valve	l/min	210
Steam valve connection	BSP	1/2"

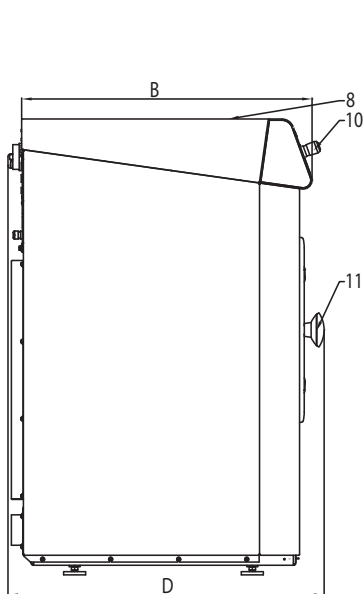
TYPE		FX 135
CAPACITY	kg	14
drum volume	litres	135
diameter	mm	620
DRUM SPEED		
wash	rpm	49
extraction	rpm	1075
G-FACTOR		400
HEATING		
electricity (standard)	kW	9 / 12
steam	bar	1 - 8
hot water	°C	90
WEIGHT, NET	kg	255
Sound pressure level	dB (A)	< 65
Water valves connection	BSP	3/4"
Water pressure	kPa	100-800
Rec. water pressure	kPa	300-500
Water inlet	l/min	20
Drain valve	outer Ø mm	76
Flow amount with drain valve	l/min	210
Steam valve connection	BSP	1/2"

TYPE		FX 180
CAPACITY	kg	18
drum volume	litres	180
diameter	mm	750
DRUM SPEED		
wash	rpm	42
extraction	rpm	980
G-FACTOR		400
HEATING		
electricity (standard)	kW	12/18
steam	bar	1-8
hot water	°C	90
WEIGHT, NET	kg	350
Sound pressure level	dB (A)	<65
Water valves connection	BSP	3/4"
Water pressure	kPa	100-800
Rec. water pressure	kPa	300-500
Water inlet	l/min	20
Drain valve	outer Ø mm	76
Flow amount with drain valve	l/min	210
Steam valve connection	BSP	1/2"

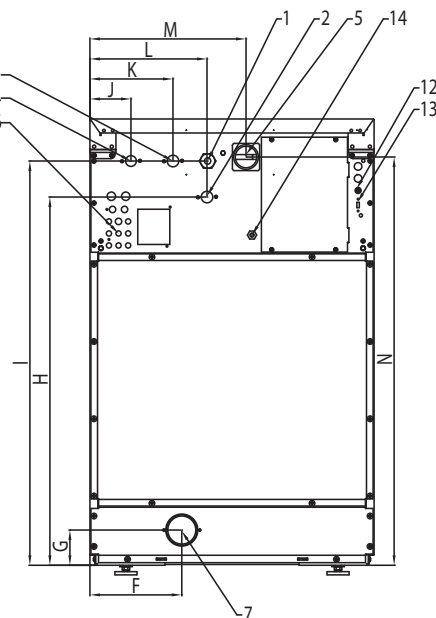
TYPE		FX 240
CAPACITY	kg	24
drum volume	litres	240
diameter	mm	750
DRUM SPEED		
wash	rpm	42
extraction	rpm	980
G-FACTOR		400
HEATING		
electricity (standard)	kW	18
steam	bar	1-8
hot water	°C	90
WEIGHT, NET	kg	400
Sound pressure level	dB (A)	<65
Water valves connection	BSP	3/4"
Water pressure	kPa	100-800
Rec. water pressure	kPa	300-500
Water inlet	l/min	20
Drain valve	outer Ø mm	76
Flow amount with drain valve	l/min	210
Steam valve connection	BSP	1/2"



Front



Left side



Rear

- 1 Electrical connection
- 2 Hot water
- 3 Cold water hard
- 4 Cold water soft
- 5 Main switch
- 6 Connection liquid soap
- 7 Drain
- 8 Soap dispenser
- 9 Control panel
- 10 Button CENTRALSTOP
- 11 Door opening,
FX65, FX80: Ø 330;
FX105, FX135: Ø 410
FX180, FX 240: Ø 460
- 12 Fuses
- 13 USB port
- 14 Electrical connection
to liquid soap pumps

DIMENSIONS

	A	B	C	D	E	F	G	H	I	J	K	L	M	N	O
FX65	710	676	1115	740	355	230	88	920	1010	103	208	293	390	1020	24
FX80	710	726	1115	790	355	230	88	920	1010	103	208	293	390	1020	24
FX105	795	761	1225	795	342	230	88	1030	1120	103	208	379	475	1130	24
FX135	795	911	1225	942	342	230	88	1030	1120	103	208	379	475	1130	24
FX180	968	906	1410	968	477	270	108,5	1215	1305	102,5	207,5	292,5	610	1315	24
FX240	968	1041	1410	1105	477	270	108,5	1215	1305	102,5	207,5	292,5	610	1315	24
	width	depth	height												

WATCH
THE FX VIDEO



FINAL WORD BY VICE PRESIDENT OF SALES AND MARKETING

Dear Customer,

In 2011, Primus celebrates its 100th anniversary. During this past century, the industry has experienced many revolutions. And as a world-class player, Primus has always held its own by developing and innovating proactively. The launch of the FX line is particularly important with a view to Primus' future growth. Energy and water are rapidly becoming the greatest challenges of the 21st century – and therefore, water- and energy-saving machines are unmistakably a must. In addition, today's customers have an eye for detail. So, to anticipate this, Primus has worked with a highly regarded design agency. Our excellent network of distributors has convinced us that, with the brand-new FX line, we have the right product to meet the challenges of the coming years.



Jean-Baptiste Van Damme
Vice President Sales and Marketing Primus Group

PRIMUS BELGIUM

Driemasten 126, B-8560 Gullegem
Belgium

Tel.: +32 56 43 52 00
Fax: +32 56 40 34 63
E-mail: info@primuslaundry.com

PRIMUS CENTRAL EUROPE

Místecká 1116, 742 58, Příbor
Czech Republic

Tel.: +420 556 768 800
Fax: +420 556 723 383
E-mail: sales@primuslaundry.cz

www.primuslaundry.com